

Switching and Access Training, Assessment and Authorisation

Course, Assessment and Reauthorisation Guideline for Technical Training and Assessment

Table of Contents

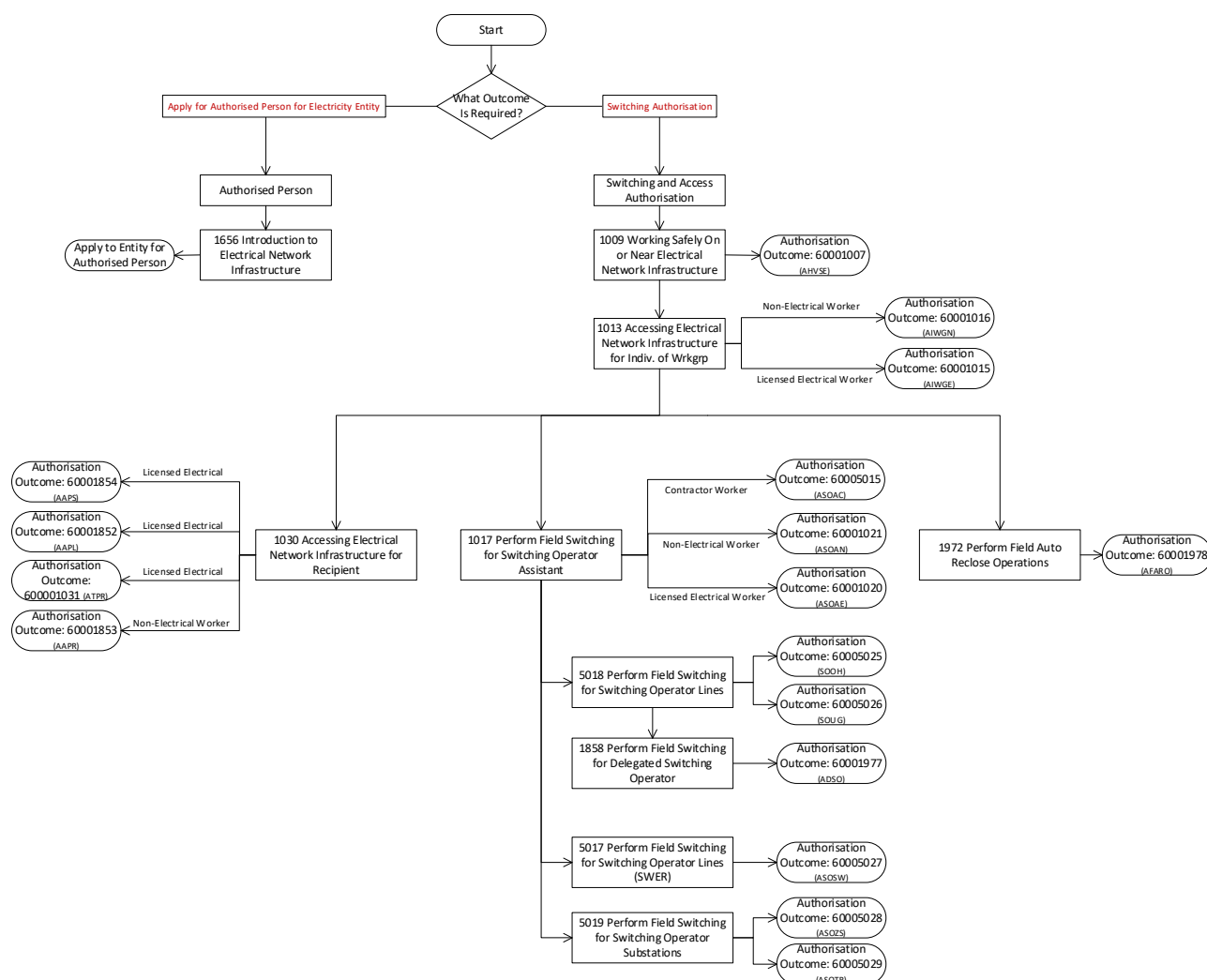
Purpose	3
Switching and Access Training Framework	3
Switching and Access Initial Training Program	4
Ergon Energy and Energex Employees	4
Contractor Workers and Service Providers	4
1009 Working Safely On or Near Electrical Network Infrastructure	5
1013 Accessing Electrical Network Infrastructure for the Individual of Workgroup	6
1030 Accessing Electrical Network Infrastructure for the Recipient.....	8
1017 Perform Field Switching for the Switching Operator Assistant	10
5018 Perform Field Switching for the Switching Operator Lines (Overhead and/or Underground)	12
5017 Perform Field Switching for the Switching Operator Lines (SWER Network).....	14
5019 Perform Field Switching for the Switching Operator Substations.....	16
1972 Perform Field Auto Reclose Operations	18
1858 Perform Field Switching for the Delegated Switching Operator	19
1656 Introduction to Electrical Network Infrastructure for Authorised Persons.....	20
Switching and Access Reauthorisation Program	21
Reauthorisation Program “Three Gate” Matrix	21
Switching and Access Online Theory Assessment Framework.....	23

Purpose

This guideline provides an overview of the High Voltage Switching and Access training and reassessment courses available within Energy Queensland Limited.

Switching and Access Training Framework

The switching and access training framework and authorisation pathways for Energy Queensland is outlined below. This framework applies to employees of Ergon Energy, Energex and all other Contractor Workers.



Switching and Access Initial Training Program

The Switching and Access training program consists of the following courses. Click on the course link to go to the relevant section of this guideline.

Ergon Energy and Energex Employees

- [1009 Working Safely On or Near Electrical Network Infrastructure \(T0838\)](#)
- [1013 Accessing Electrical Network Infrastructure for the Individual of Workgroup \(T0839\)](#)
- [1030 Accessing Electrical Network Infrastructure for the Recipient \(T0840\)](#)
- [1017 Perform Field Switching for the Switching Operator Assistant \(T0841\)](#)
- [5018 Perform Field Switching for the Switching Operator Lines \(Overhead and Underground\)](#)
- [5019 Perform Field Switching for the Switching Operator Transmission](#)
- [1858 Perform Field Switching for the Delegated Switching Operator \(T0109\)](#)

Contractor Workers and Service Providers

- [1009 Working Safely On or Near Electrical Network Infrastructure \(T0838\)](#)
- [1013 Accessing Electrical Network Infrastructure for the Individual of Workgroup \(T0839\)](#)
- [1030 Accessing Electrical Network Infrastructure for the Recipient \(T0840\)](#)
- [1017 Perform Field Switching for the Switching Operator Assistant \(T0841\)](#)
- [5017 Perform Field Switching for the Switching Operator Lines \(SWER Network\)](#)
- [1972 Perform Field Auto Reclose Operations](#)

The following course is available to Contractor Workers and Service Providers but **WILL NOT** provide an alternative entry pathway into the Switching and Access training and authorisation framework.

This course is designed for Contractor Workers who want to apply to become an 'Authorised Person' for the electricity network as outlined in Section 3.4 of the [Code of Practice for Working Near Overhead and Underground Electric Lines](#).

- [1656 Introduction to Electrical Network Infrastructure for Authorised Persons \(T0911\)](#)

1009 Working Safely On or Near Electrical Network Infrastructure

[BACK TO TRAINING PROGRAM](#)

Training and Assessment Information

Purpose: This course has been designed to develop the knowledge and skills required to identify relevant exclusion zones, manage associated hazards and work safely on or near electrical network infrastructure.

Target Audience: Ergon Energy and Energex employees and Contractor Workers who require an authorisation for Safe Entry to High Voltage Enclosure to safely enter, work within and exit Ergon Energy and Energex high voltage enclosures.

Pre-requisites:

- **Ergon Energy and Energex Employees:** No pre-requisites are applicable
- **Contractor Workers:** 1083 Generic Contractor Worker Induction (T0499)

Nominal Duration:

- 16 hours

Delivery Mode: Instructor-Led

Assessment Tasks:

- Written Theory Assessment
- Practical Assessment

Additional Information: [Refer to Course Brief](#)

Authorisation Information

Authorisation Outcome: The authorisation outcome for this course is as follows:

- 60001007: Safe Entry to High Voltage Enclosures (AHVSE)

Authorisation Validity Period: This authorisation is valid for a period of:

- 3 Years

Reauthorisation Requirement:

- **GATE 2:** Online Theory Assessment completed in Year 3 of authorisation period

1013 Accessing Electrical Network Infrastructure for the Individual of Workgroup

[BACK TO TRAINING PROGRAM](#)

Training and Assessment Information

Purpose: This course is designed to provide the underpinning knowledge and required skills needed for someone to work on or near high voltage electrical lines and apparatus covered by Permits and Notices under the direction of a Recipient.

Target Audience: Ergon Energy and Energex employees and Contractor Workers who require authorisation as an Individual of Workgroup to sign on to and work under the direction of a Recipient of an Access Permit, Test Permit or Non Access Work Notice.

Pre-requisites: The pre-requisites for this course are as follows:

- 60001007: Safe Entry to High Voltage Enclosure Authorisation (AHVSE)

Nominal Duration: 16 hours

Delivery Mode: Instructor-Led

Assessment Tasks:

- Written Theory Assessment
- Practical Assessment (Electrical); or
- Practical Assessment (Non-Electrical)

Additional Information: [Refer to Course Brief](#)

Authorisation Information

Authorisation Outcome: The authorisation outcomes for this course are as follows:

- 60001015: Individual of Workgroup (Electrical) (AIWGE)*; **OR**
- 60001016: Individual of Workgroup (Non-Electrical) (AIWGN)

*** NOTE:** To assign an authorisation outcome of **60001015 (AIWGE)**, the Participant **MUST** be confirmed as holding a current and relevant Queensland electrical licence or be an apprentice on an electrical training program.

Authorisation Validity Period: This authorisation is valid for a period of:

- 3 Years

Reauthorisation Requirement:

- **GATE 2:** Online Theory Assessment completed in Year 3 of authorisation period

1030 Accessing Electrical Network Infrastructure for the Recipient

[BACK TO TRAINING PROGRAM](#)

Training and Assessment Information

Purpose: This course is designed to provide the underpinning knowledge and required skills needed for an authorised Recipient to receive Permits and Notices for access to work on or near electrical network infrastructure.

Target Audience: Ergon Energy and Energex employees and Contractor Workers who require authorisation as a Recipient to receive an Access Permit, Test Permit or Non Access Work Notice and supervise electrical safety at the work area.

Pre-requisites: The pre-requisites for this course are as follows:

- 60001015: Individual of Workgroup (Electrical) Authorisation (AIWGE); OR
- 60001016: Individual of Workgroup (Non-Electrical) Authorisation (AIWGN)

Nominal Duration: 24 hours

Delivery Mode: Instructor-Led

Assessment Tasks:

- Written Theory Assessment
- Practical Assessment (Access Permit Recipient – Lines); and/or
- Practical Assessment (Access Permit Recipient – Substation); and/or
- Practical Assessment (Test Permit Recipient – Substation); and/or
- Practical Assessment (Access Permit Recipient – Lines Restricted) (Contractor Workers only)
- On Job Competency Portfolio

Additional Information: [Refer to Course Brief](#)

Authorisation Information

Authorisation Outcomes: The authorisation outcome for this course are as follows:

- **Provisional Authorisations:**

Provisional authorisations are assigned on completion of the Instructor-Led component of the training. Learners will be issued with an on-job Competency Portfolio which must be completed and returned for assessment. Provisional authorisation may only be held for a maximum of 12 months, after which they will expire.

- 60001849: Access Permit Recipient (Lines) Provisional (APRL)*
- 60001851: Access Permit Recipient (Substation) Provisional (APRS) *
- 60001032: Test Permit Recipient Provisional (APRT) *
- 60001850: Access Permit Recipient (Lines – Restricted) Provisional (Contractor Workers only) (APRR)

- **Full Authorisation:**

Full authorisations are assigned on obtaining a ‘Satisfactory’ outcome for the on-job Competency Portfolio and the In-Field Switching Evaluation.

- 60001852: Access Permit Recipient (Lines) (AAPRL) *
- 60001854: Access Permit Recipient (Substation) (AAPRS) *
- 60001031: Test Permit Recipient (ATPR) *
- 60001853: Access Permit Recipient (Lines Restricted) (Contractor Workers only) (APRR)

NOTE: To assign the authorisation outcomes with an asterisk (*) beside them in the list above the Learner **MUST** be confirmed as holding a current and relevant Queensland electrical licence.

Authorisation Validity Period: This authorisation is valid for a period of:

- 3 years

Reauthorisation Requirement:

- **GATE 1:** In-field Switching Record of Work Portfolio consisting of five Permits they have received and will need to include Permits for each Recipient authorisation held. For example, if they hold Access Permit Recipient Lines (AAPRL) (60001852), Access Permit Recipient Substation (AAPRS) (60001854) and Test Permit Recipient (ATPR) (60001031), they will be required to log at least 1 from each authorisation.
- **GATE 2:** Online Theory Assessment completed in Year 3 of authorisation period.

1017 Perform Field Switching for the Switching Operator Assistant

[BACK TO TRAINING PROGRAM](#)

Training and Assessment Information

Purpose: This course is designed to provide the underpinning knowledge and required skills needed for an authorised Switching Operator Assistant to assist the Switching Operator in performing switching and access operations on the high voltage network.

Target Audience: Ergon Energy and Energex employees and Contractor Workers who require authorisation as a Switching Operator Assistant (electrical OR non-electrical) to perform field switching operations as part of a team with the Switching Operator.

Pre-requisites:

- 60001015: Individual of Workgroup (Electrical) Authorisation (AIWGE); **OR**
- 60001016: Individual of Workgroup (Non-Electrical) Authorisation (AIWGN)

Nominal Duration: 24 hours

Delivery Mode: Instructor-Led

Assessment Tasks:

- Written Theory Assessment
- Practical Assessment (Switching Operator Assistant – Electrical); or
- Practical Assessment (Switching Operator Assistant – Non-Electrical)
- On Job Competency Portfolio

Additional Information: [Refer to Course Brief](#)

Authorisation Information

Authorisation Outcome: The authorisation outcomes for this course are as follows:

- **Provisional Authorisations:**

Provisional authorisations are assigned on completion of the Instructor-Led component of the training. Learners will be issued with an on-job Competency Portfolio which must be completed and returned for assessment. Provisional authorisation may only be held for a maximum of 12 months, after which they will expire.

- 60001033: Switching Operator Assistant (Electrical) Provisional (APSOA)

- **Full Authorisation:**

- 60001021: Switching Operator Assistant (Non-Electrical) (ASOAN)
- 60005015: Switching Operator Assistant (Contractor) (ASOAC)

The full authorisation for Switching Operator Assistant (Electrical) is assigned on obtaining a 'Satisfactory' outcome for the on-job Competency Portfolio and the In-Field Switching Evaluation.

- 60001020: Switching Operator Assistant (Electrical) (ASOAE)

NOTE 1: To assign authorisation outcome of 60001033 Switching Operator Assistant (Electrical) Provisional (APSOA) or 60001020 Switching Operator Assistant (Electrical) (ASOAE) the **internal** employee **MUST** be confirmed to hold a current Queensland electrical licence.

NOTE 2: Contractor Workers **ARE NOT** eligible to obtain an authorisation outcome of 60001020 Switching Operator Assistant (Electrical) (ASOAE) even if they are confirmed to hold a current Queensland electrical licence.

Authorisation Validity Period: This authorisation is valid for a period of:

- 3 years

Reauthorisation Requirement:

- **GATE 1:** In-field Switching Record of Work Portfolio consisting of five Switching Sheets where the role of Switching Operator Assistant was performed. **NOTE:** This evidence does not need to be collected if the Learner also holds one or more of the Switching Operator authorisations.
- **GATE 2:** Online Theory Assessment completed in Year 3 of authorisation period.

5018 Perform Field Switching for the Switching Operator Lines (Overhead and/or Underground)

[BACK TO TRAINING PROGRAM](#)

Training and Assessment Information

Purpose: This course is designed to provide the underpinning knowledge and required skills to perform field switching operations on distribution and sub-transmission overhead and/or underground network up to and including 66kV across Energy Queensland.

Target Audience: Ergon Energy and Energex employees who require authorisation as a Switching Operator Lines (overhead and/or underground) to perform field switching operations on the high voltage network.

Pre-requisites: The pre-requisites for this course are as follows:

- 60001020: Switching Operator Assistant (Electrical) (ASOAE)

Nominal Duration: To be advised

Delivery Mode: Instructor-Led

Assessment Tasks:

- Written Theory Assessment
- Practical Assessment (Switching Operator Lines – Overhead); and/or
- Practical Assessment (Switching Operator Lines – Underground)
- On Job Competency Portfolio

Additional Information: To be advised

NOTE: This course is **in development** and not currently available for nominations or enrolments.

Authorisation Information

Authorisation Outcome: The authorisation outcomes for this course are as follows:

- **Provisional Authorisations:**

Provisional authorisations are assigned on completion of the Instructor-Led component of the training. Learners will be issued with an on-job Competency Portfolio which must be completed and returned for assessment. Provisional authorisation may only be held for a maximum of 12 months, after which they will expire.

- 60005020: Switching Operator Lines (Overhead) Provisional; **AND/OR**
- 60005021: Switching Operator Lines (Underground) Provisional

- **Full Authorisation:**

Full authorisations are assigned on obtaining a 'Satisfactory' outcome for the on-job Competency Portfolio and the In-Field Switching Evaluation.

- 60005025: Switching Operator Lines (Overhead); **AND/OR**
- 60005026: Switching Operator Lines (Underground)

Authorisation Validity Period: This authorisation is valid for a period of:

- 3 years

Reauthorisation Requirement:

- **GATE 1:** In-field Switching Record of Work Portfolio consisting of five Switching Sheets where the role of Switching Operator was performed, with at least one sheet from each authorisation held. For example, if Switching Operator authorisations for overhead, underground and substation are held then evidence of at least one switching sheet for each authorisation must be submitted.
- **GATE 3:** In-field Evaluation performed by an authorised In-field Switching Evaluator in Year 3 of the authorisation period.

5017 Perform Field Switching for the Switching Operator Lines (SWER Network)

[BACK TO TRAINING PROGRAM](#)

Training and Assessment Information

Purpose: This course is designed to provide the underpinning knowledge and required skills to perform field switching operations on SWER networks across Energy Queensland.

Target Audience: Contractor Workers who require an authorisation for Switching Operator Lines (SWER Network) to perform field switching operations on the SWER high voltage network.

Pre-requisites: The pre-requisites for this course are as follows:

- 60005015: Switching Operator Assistant (Contractor) (ASOAC); **AND**
- Current Queensland Electrical Licence; **OR**
- 60001015: Individual of Workgroup (Electrical) (AIWGE)

Nominal Duration: To be advised

Delivery Mode: Instructor-Led

Assessment Tasks:

- Written Theory Assessment
- Practical Assessment
- On Job Competency Portfolio

Additional Information: To be advised

NOTE: This course is in development and not currently available for nominations or enrolments.

Authorisation Information

Authorisation Outcome: The authorisation outcomes for this course are as follows:

- **Provisional Authorisations:**

Provisional authorisations are assigned on completion of the Instructor-Led component of the training. Learners will be issued with an on-job Competency Portfolio which must be completed and returned for assessment. Provisional authorisation may only be held for a maximum of 12 months, after which they will expire.

- 60005022: Switching Operator Lines (SWER) Provisional

- **Full Authorisation:**

Full authorisations are assigned on obtaining a 'Satisfactory' outcome for the on-job Competency Portfolio and the In-Field Switching Evaluation.

- 60005027: Switching Operator Lines (SWER)

Authorisation Validity Period: This authorisation is valid for a period of:

- 3 years

Reauthorisation Requirement:

- **GATE 1:** In-field Switching Record of Work Portfolio consisting of five Switching Sheets.
- **GATE 3:** In-field Evaluation performed by an authorised In-field Switching Evaluator in Year 3 of the authorisation period.

5019 Perform Field Switching for the Switching Operator Substations

[BACK TO TRAINING PROGRAM](#)

Training and Assessment Information

Purpose: This course is designed to provide the underpinning knowledge and required skills required to perform field switching operations on the sub-transmission and transmission network excluding the Powerlink network.

Target Audience: Ergon Energy and Energex employees who require authorisation as a Switching Operator to perform field switching operations in substations or on transmission lines on the high voltage network.

Pre-requisites: The pre-requisites for this course are as follows:

- 60001020: Switching Operator Assistant (Electrical) (ASOAE)

Nominal Duration: To be advised

Delivery Mode: Instructor-Led

Assessment Tasks:

- Written Theory Assessment
- Practical Assessment
- On Job Competency Portfolio

Additional Information: To be advised.

NOTE: This course is in development and not currently available for nominations or enrolments.

Authorisation Information

Authorisation Outcome: The authorisation outcomes for this course are as follows:

- **Provisional Authorisations:**

Provisional authorisations are assigned on completion of the Instructor-Led component of the training. Learners will be issued with an on-job Competency Portfolio which must be completed and returned for assessment. Provisional authorisation may only be held for a maximum of 12 months, after which they will expire.

- 60005023: Switching Operator (EQL Zone \leq 66kV) Provisional; **OR**
- 60005024: Switching Operator (Transmission Lines & Subs) Provisional

- **Full Authorisation:**

Full authorisations are assigned on obtaining a 'Satisfactory' outcome for the on-job Competency Portfolio and the In-Field Switching Evaluation.

- 60005028: Switching Operator (EQL Zone \leq 66kV); OR
- 60005029: Switching Operator (Transmission Lines & Subs)

Authorisation Validity Period: This authorisation is valid for a period of:

- 3 years

Reauthorisation Requirement:

- **GATE 1:** In-field Switching Record of Work Portfolio consisting of five Switching Sheets for each Switching Operator authorisation (EQL Zone \leq 66kV and/or Switching Operator Transmission Lines & Subs) held.
- **GATE 3:** In-field Evaluation performed by an authorised In-field Switching Evaluator in Year 3 of the authorisation period.

1972 Perform Field Auto Reclose Operations

[BACK TO TRAINING PROGRAM](#)

Training and Assessment Information

Purpose: This course is designed to provide the underpinning knowledge and required skills required to block and restore Automatic Circuit Reclosers on the high voltage network across Energy Queensland.

Target Audience: Contractor Workers who require authorisation as a Field Auto Reclose Operator to perform the auto-reclose function (block / restore) of Automatic Circuit Reclosers (ACR) on overhead distribution feeders for vegetation control or High Voltage Live Work (HVLW).

Pre-requisites: The pre-requisites for this course are as follows:

- 60001015: Individual of Workgroup (Electrical) (AIWGE)

Nominal Duration: 8 hours

Delivery Mode: Instructor-Led

Assessment Tasks:

- Written Theory Assessment
- Practical Assessment

Additional Information: To be advised

NOTE: This course is in development and not currently available for nominations or enrolments.

Authorisation Information

Authorisation Outcome: The authorisation outcome for this course is as follows:

- 60001978: Field Auto Reclose Operator

Authorisation Validity Period: This authorisation is valid for a period of:

- 3 years

Reauthorisation Requirement:

- **GATE 1:** In-field Switching Record of Work Portfolio consisting of five Auto Reclose Block forms
- **GATE 3:** In-field Evaluation performed by an authorised In-field Switching Evaluator in Year 3 of the authorisation period.

1858 Perform Field Switching for the Delegated Switching Operator – Simple Systems

[BACK TO TRAINING PROGRAM](#)

Training and Assessment Information

Purpose: This course is designed to provide the underpinning knowledge and required skills required to coordinate planned and unplanned Switching and Access on simple distribution systems.

Target Audience: Ergon Energy and Energex employees who require authorisation as a Delegated Switching Operator to coordinate planned and unplanned switching operations.

Pre-requisites: The pre-requisites for this course are as follows:

- 60005025: Switching Operator Lines (Overhead)

Duration: To be advised

Delivery Mode: Instructor-Led

Assessment Tasks:

- Written Theory Assessment

Additional Information: To be advised

NOTE: This course is in development and not currently available for nominations or enrolments.

Authorisation Information

Authorisation Outcome: The authorisation outcome for this course is as follows:

- 60001977: Delegated Switching Operator – Simple Systems

Authorisation Validity Period: This authorisation is valid for a period of:

- 3 years

Reauthorisation Requirement:

- **GATE 2:** Online Theory Assessment completed in Year 3 of authorisation period.

1656 Introduction to Electrical Network Infrastructure for Authorised Persons

[BACK TO TRAINING PROGRAM](#)

Training and Assessment Information

Purpose: This course has been designed to develop the knowledge and skills required to identify relevant exclusion zones, manage associated hazards and work safely on or near electrical network infrastructure as an ‘authorised person’.

NOTE: This course **DOES NOT** provide an alternative entry pathway for Contractor Workers into the Energy Queensland Switching and Access training framework. If a switching authorisation is required Contractor Workers (and Employees) **MUST** complete [1009 Working Safely On or Near Electrical Network Infrastructure \(T0838\)](#).

Target Audience: Contractor Workers who want to apply to the Electricity Entity (Ergon Energy or Energex) for approval as an ‘authorised person’ as defined in Section 3.4 of the [Code of Practice for Working Near Overhead and Underground Electric Lines](#).

Pre-requisites: No pre-requisites are applicable

Nominal Duration: 8 hours

Delivery Mode: Instructor-Led

Assessment Tasks:

- Written Theory Assessment

Additional Information: [Refer to Course Brief](#)

Authorisation Information

Authorisation Outcome: An authorisation is **NOT** assigned as an outcome of this course.

To apply to become an Authorised Person the Applicant must submit a request via an online ‘Authorised Person’ request form:

- **Ergon Energy:** [Authorised Person Request Form](#)
- **Energex:** [Authorised Person Request Form](#)

Authorisation Validity Period: Not Applicable

Reauthorisation Requirement: Not Applicable

Switching and Access Reauthorisation Program

NOTE: The assessments listed in this section are in development and are not currently available for nominations or enrolments.

The Queensland Electricity Entity Standards for Safe Access to High Voltage Electrical Apparatus require Entities to assess their authorised persons as competent at intervals not exceeding three years.

The reauthorisation program consists of three “gates”:

1. The first ‘gate’ is for staff to log experience via the Switching Record of Work Portfolio app.
2. The second ‘gate’ is an online theory assessment.
3. The third ‘gate’ is a face-to-face onsite evaluation carried out by a Workplace Assessor Trainer whilst carrying out a switching sheet, under normal switching conditions. (Required for operator roles only, not required for Recipient or Switching Operator Assistant roles).

For other non-operating roles (e.g. individual of a workgroup, safe entry to high voltage enclosures), the requirement for reauthorisation is to carry out the online theory reassessment only (experience log and onsite evaluation is not required).

Reauthorisation Program “Three Gate” Matrix

The table below outlines the “gates” to be completed for each authorisation role held by Ergon Energy and Energex employees or contractor workers.

Authorisation	GATE 1 Switching Record of Work Portfolio	GATE 2 Online Theory Assessment	GATE 3 Field Evaluation
60001007: Safe Entry to High Voltage Enclosure	x	✓	x
60001015: Individual of Workgroup (Electrical)	x	✓	x
60001016: Individual of Workgroup (Non-Electrical)	x	✓	x
60001852: Access Permit Recipient (Lines)	✓	✓	x
60001854: Access Permit Recipient (Substation)	✓	✓	x

Authorisation	GATE 1 Switching Record of Work Portfolio	GATE 2 Online Theory Assessment	GATE 3 Field Evaluation
60001031: Test Permit Recipient	✓	✓	✗
60001853: Access Permit Recipient (Lines Restricted) (Contractor Workers only)	✓	✓	✗
60001020: Switching Operator Assistant (Electrical)	✓	✓	✗
60001021: Switching Operator Assistant (Non-Electrical)	✓	✓	✗
60005015: Switching Operator Assistant (Contractor)	✓	✓	✗
60001978: Field Auto Reclose Operator (Contractor Workers only)	✓	✗	✓
60005025: Switching Operator Lines (Overhead)	✓	✗	✓
60005026: Switching Operator Lines (Underground)	✓	✗	✓
60005027: Switching Operator Lines (SWER) (Contractor Workers only)	✓	✗	✓
60005028: Switching Operator (EQL Zone ≤ 66kV)	✓	✗	✓
60005029: Switching Operator (Transmission Lines & Subs)	✓	✗	✓
60001977: Delegated Switching Operator	✗	✓	✗

Switching and Access Online Theory Assessment Framework

The Switching and Access reauthorisation program consists of the following online theory assessments to support completion of 'Gate 2'.

- **4027 Safe Entry to High Voltage Enclosures Reauthorisation Theory Assessment:**

This online theory assessment is designed to assess the underpinning knowledge required to:

- safely enter, work within and exit a high voltage enclosure.

- **4028 Individual of Workgroup Reauthorisation Theory Assessment:**

This online theory assessment is designed to assess the underpinning knowledge required to:

- perform the role and responsibilities of an individual of workgroup working under Permits and Authorities.

- **4029 Recipient Reauthorisation Theory Assessment:**

This online theory assessment is designed to assess the underpinning knowledge required to:

- perform the role and responsibilities of Recipient to take receipt of Permit and Notices and supervising electrical safety at the work area.

- **4030 Switching Operator Assistant Reauthorisation Theory Assessment:**

This online theory assessment is designed to assess the underpinning knowledge required to:

- perform the role and responsibilities of Switching Operator Assistant working as part of a team with the Switching Operator.

- **1751 Delegated Switching Operator – Simple Systems Theory Assessment:**

This online theory assessment is designed to assess the underpinning knowledge required to:

- coordinate planned and unplanned Switching and Access on simple distribution systems.

Nominations to Switching and Access theory assessments will be dependent on the authorisations held.

Authorisations Held by	Online Theory Assessment Course Code				
	4027	4028	4029	4030	1751
Person holds authorisations for: <ul style="list-style-type: none"> • Safe Entry to High Voltage Enclosures 	✓	x	x	x	x
Person holds authorisations for: <ul style="list-style-type: none"> • Safe Entry to High Voltage Enclosures; AND • Individual of Workgroup <ul style="list-style-type: none"> ○ Electrical; or ○ Non-Electrical 	✓	✓	x	x	x
Person holds authorisations for: <ul style="list-style-type: none"> • Safe Entry to High Voltage Enclosures; AND • Individual of Workgroup; AND <ul style="list-style-type: none"> ○ Electrical; or ○ Non-Electrical • Recipient <ul style="list-style-type: none"> ○ Access Permit Recipient (Lines); and/or ○ Access Permit Recipient (Substation); and/or ○ Test Permit Recipient; or ○ Access Permit Recipient (Lines Restricted) (Contractor Workers only) 	✓	✓	✓	x	x
Person holds authorisations for: <ul style="list-style-type: none"> • Safe Entry to High Voltage Enclosures; AND • Individual of Workgroup; AND <ul style="list-style-type: none"> ○ Electrical; or ○ Non-Electrical • Switching Operator Assistant <ul style="list-style-type: none"> ○ Electrical; or ○ Non-Electrical 	✓	✓	x	✓	x

Authorisations Held by	Online Theory Assessment Course Code				
	4027	4028	4029	4030	1751
Person holds authorisations for: <ul style="list-style-type: none"> • Safe Entry to High Voltage Enclosures; AND • Individual of Workgroup; AND <ul style="list-style-type: none"> ○ Electrical; or ○ Non-Electrical • Switching Operator Assistant; AND <ul style="list-style-type: none"> ○ Electrical; or ○ Non-Electrical • Recipient <ul style="list-style-type: none"> ○ Access Permit Recipient (Lines); and/or ○ Access Permit Recipient (Substation); and/or ○ Test Permit Recipient; or ○ Access Permit Recipient (Lines Restricted) 	✓	✓	✓	✓	x
Person holds authorisations for: <ul style="list-style-type: none"> • Safe Entry to High Voltage Enclosures; AND • Individual of Workgroup; AND <ul style="list-style-type: none"> ○ Electrical; or ○ Non-Electrical • Field Auto Recloser Operator 	✓	✓	x	x	x
Person holds authorisation for: <ul style="list-style-type: none"> • Delegated Switching Operator – Simple Systems 	x	x	x	x	✓